



ANNUAL REPORT

2018

**Park Orchards
Community House & Learning Centre**



Our Vision

*Strengthened Community Participation,
Enhancement and Wellbeing*

Our Mission

*To Provide Quality Community
Engagement through Social,
Recreational and Learning Activities*

Contents

Chairperson's Report	Page 4
Board of Management	Page 5
Staff	Page 7
Manager's Report	Page 8
About us	Page 11
Manningham Business Excellence Awards	Page 12
Community	Page 15
Robyn Murray Award	Page 16
Vocational Education & Training	Page 15
Nature in Art	Page 19
A Room to play, grow, learn and Share	Page 20
Childcare	Page 22
Activity Group	Page 27
Community Garden	Page 28
Library	Page 29
Acknowledgements	Page 30

Chairperson's Report

In my last annual report, I discussed the enormous growth in the number of courses and classes that the Community House offered, and the huge number of people that came to participate, over the previous year. The Community House, under the direction of the manager Pauline Fyffe, certainly packs a punch for such a relatively small, not-for-profit community organisation. During 2018, we saw another increase in the number of people partaking in what the Community House has to offer. The Community House engaged with 1818 people across 69 community courses, encouraging 293 adults by extending their work qualifications through our RTO courses.

A key aim of the Community House is the provision of opportunities for community members to engage with others through social, recreational and learning activities. The Board, Administration, Staff and Course Instructors are especially proud of the growth in the number of people accessing the Community House and Learning Centre. Numbers attending the various activities on offer are strong, and are indicators of the value that the community and surrounding areas place on the organization and its activities.

The Board was particularly proud of the acknowledgement from the Manningham Business community in being shortlisted in 2017, then winning the Manningham Business Excellence Awards in 2018. This award acknowledges the exemplary business practices of the organisation, and the service that our manager and staff offer the community.

Currently, the Community House operates over three main facilities, the House at 572 Park Road, and in spaces at the community facility at Domeney Reserve, and the Warrandyte South Hall on Hall Rd. At our last Annual General Meeting, a motion was passed to pursue the construction of additional space at the Community House in Park Rd to expand our childcare and operational class space. This has not been an easy task. Because of the location of the Community House there were multiple government agencies to negotiate with, and this has taken many months. The Board is extremely pleased that we have achieved consent from the Department of Crown Lands and Manningham City Council for the project, and successfully gained planning permission. A builder has been engaged for the completion of the project in the third quarter of 2019. We were also very fortunate, through community support, to gain a grant from the Victorian State Government via their Pick My Project Scheme. Gaining this grant has meant that we can build our new facility to support the community way into the future. This new space will bring amazing options and expansion of the Community House's operational ability.

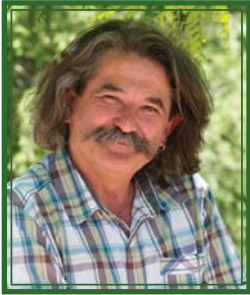
Growing collaborations with the four other community houses in the Manningham area, to support the broader population of our local government area, has developed into the Manningham Learns initiative over the last year and a half. This initiative is a key area for further development for our community house and the Manningham City Council. The initiative aims to share expertise, offer an even broader range of courses across the board, and develop further social opportunities for the larger population. To run all the various accredited courses, leisure activities and care facilities, the Community House receives financial support and donations from:

- Manningham City Council,
- Department of Education and Training,
- Department of Health and Human Services, Victorian Government

We acknowledge and thank them for their continued support of our community organisation. Finally, I would like to formally thank Staff, Board members and all the volunteers that attend the Community House for their dedication, outstanding contribution and most importantly for the positive vibe that one gets on entering the organization or attending classes. Park Orchards Community House and Learning Centre is certainly an awesome organization to be part of.

Thank you
Michael Green
Chairperson

2018 Board of Management



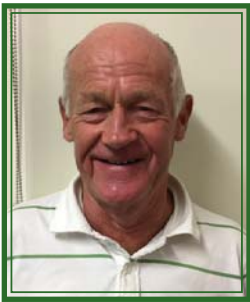
Michael Green
Chairperson

Mike joined the Board in 2016. Mike is the past-Principal of Ringwood North Primary School, and brings 40 years of experience in education as a Teacher and Administrator.



John Balshaw
Vice Chairperson

John joined the Board in 2014 and is an experienced First Aid trainer. John contributes valuable knowledge about the VET industry.



Bob Rusling
Treasurer

Bob has a background in all things Finance. Bob has been a member of the Board since 2014.



Emma Gioserrano
Secretary

Emma joined the board in 2018. Emma has high level organisational skills through a background in administrative support in a number of industries. She has been secretary for a number of community groups.



Maxine Brenan
General Board Member

Maxine joined the board in 2017. Maxine has a varied background in nursing and teaching and has lived in the area for 20 years.



Heather Edmonds
General Board Member

Heather has a varied background in public and private enterprise. She specialises in business management, HR and WHS



Peta Harrington
General Board Member

Peta has been a valuable member of the Community House for over 20 years and a dedicated contributor to our Nature in Art program. Peta joined the board in 2018.



Del Leslie
General Board Member

Del has extensive experience in the TAFE and higher education sectors in a number of senior management roles. Del joined the board in June 2018.

Our Values

Integrity - Honest, Ethical and Committed

Diversity - Recognise the Value of the Unique Contribution of Each and Every Individual

Belonging - Promoting a sense of community spirit and acceptance

Sustainability - Striving for Excellence, Environmental Awareness and Resilience

Accountability - Transparency, Openness and Good Governance

Staff



Pauline Fyffe
Centre Manager



Lydia Denman
Assistant Manager



Cathryn Harris
VET Co-ordinator



Kate Blacket
Program Co-ordinator



Jenny King
Office Administrator



David Oswin
Financial Administrator



Julie Simpson
Office Administrator



Margie Beck
Financial Administrator



Hilary Ramadge
Early Childhood Co-ordinator



Trina Settle
Early Childhood Educator



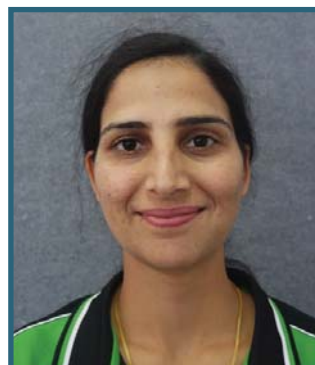
Micaelia Doolan
Early Childhood Educator



Sarisse Pullar
Early Childhood Educator



Elma Gama Leos
Early Childhood Educator



Harpinder Chand
Early Childhood Educator

Manager's Report

“A Connected Community where all People Feel valued, Involved
and have a Sense of Belonging”

Park Orchards Community House & Learning Centre Inc. brings people together to connect, learn and contribute to our local community. We provide individuals with the opportunity to achieve their goals. This could be to get fit, learn new skills, enjoy creative pursuits, volunteer, have some well-deserved respite from the rigours of parenting or make new friends. The difference we make to the lives of those who participate at our centre are positive and can be life changing. I feel privileged to work for an organisation that helps so many achieve their goals in a nurturing, inclusive environment.

2018 has been an extraordinarily eventful, successful and rewarding year for our Community House & Learning Centre. Following on from our growth in 2017, we had great plans and I am delighted to say that many of our plans have come to fruition. Below is a snapshot of our busy 2018.

Term 1

- We ran a stall at MC2 for Chinese New Year with Manningham Learns
- We delivered the first of many TAE Upgrades for VET trainers
- We had a wonderful afternoon tea for International Women's Day
- Our staff held a stall at St Anne's Strawberry Fair, engaging with our local community

Term 2

- Our community singing group began
- We launched our “Pick my Project” campaign
- Our Digital Literacy group received the Robyn Murray Award for inclusive practice
- We held a stall at the Park Orchards Community Market

Term 3

- We were successful in applying for, and receiving, an extra five hours per week of ongoing Neighbourhood House Coordination funding from the Department of Health and Human Services
- We applied for and received Child Care Subsidy approval for our childcare families
- We were successful in having the Diploma of Early Childhood Education and Care added to our scope of registration

Term 4

- We were winners in the “Pick my Project” grants – a great financial boost to support our new building and wonderful endorsement from 267 members of our community who voted for us
- We began using Hall Road for our health and fitness classes
- We celebrated Women's Health week with afternoon tea and a performance from our singing group
- We had our first Nature in Art exhibition at the lovely gallery at MC2, Doncaster
- We delivered pre-accredited training at the Warrandyte Neighbourhood House, Warrandyte
- We won the Business Benchmark Group, Manningham Business Excellence Award, 2018
- Our singing group performed at the Park Orchards Christmas celebration

All of the above would not have been possible without the highly competent and altogether wonderful administration team of Lydia Denman, Cathryn Harris, Kate Blacket, Jenny King, David Oswin, Julie Simpson and Margi Beck who work hard to ensure our mission is delivered with great warmth, support and respect for our participants.

The amazing childcare staff of Hilary Ramadge, Sarisse Pullar, Elma Gama Leos, Trina Settle, Harpinder Kaur and Micaelia Doolan provide a nurturing environment for the children who attend our service and great support for their parents. The constant waiting lists are evidence of the high regard our early childhood workers are held in our community.

Thank you to our volunteers who worked tirelessly in 2018 to support the programs and activities we offer here. We had 18 volunteers who happily contributed their time, effort and energy to support our Community. I thank Alby Boccalatte, Rebecca Breen, Jasmin Castle, Janice Clarke, Lauren Denman, Sophie Denman, Rhona Diviney, Heather Edmonds, Andrea Flory, Paul Kertes, David Lovitt, Robyn Lovitt, Linco Ma, Cathie Manning, Kaye Morton, Terry Napier, Joan Quinlan and Agnes Whittle.

We are also extremely grateful to our loyal band of brochure deliverers. Twice a term, over 30 people walk the streets of Park Orchards delivering both our term brochure and the community news.

I thank the Board of Management for all they contribute to the successful governance of our organisation. The Board – Mike Green, John Balshaw, Maxine Brennan, Heather Edmonds, Emma Giosserano, Del Leslie, Bob Rusling and Peta Harrington, continue to provide strategic leadership and unwavering faith in the organisation and the operational team and I am eternally grateful to the support they offer me. I also take this opportunity to thank Bob and Peta who are resigning today and wish them all the very best in their future activities.

I also thank the leaders of the other Neighbourhood Houses in Manningham and the CHAOS Network, who offer support and friendship

The continuing support from Manningham City Council officers and the support given to us by our Councillors is vital to our continued ability to deliver great outcomes for our community.

We are grateful for the financial support offered by:

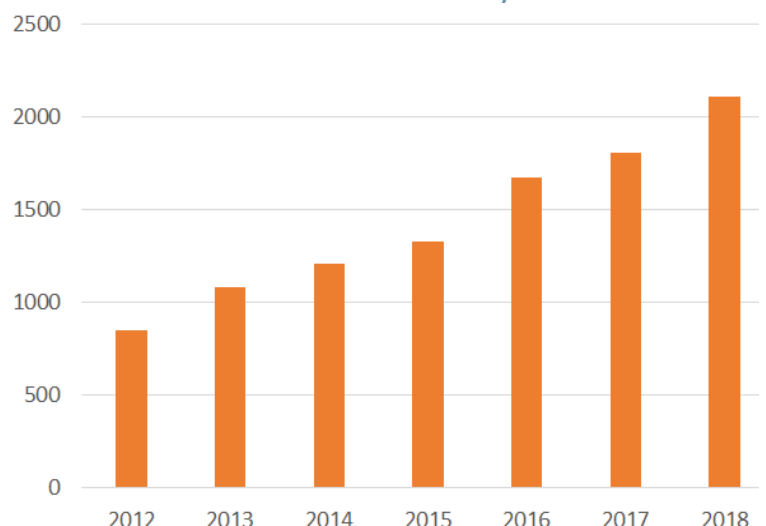
- The Department of Health and Human Services, who value the work we do as a community house.
- Manningham City Council,
- The Department of Education and Training which offers support through the Adult Community & Further Education program and the Higher Education Skills Group
- The National Occasional Care Program.

Lastly, I am grateful for the opportunity to work in a community that supports our vision of strengthening community participation, enhancement and wellbeing and I am looking forward to the next 12 months at Park Orchards Community House & Learning Centre.

Pauline Fyffe
Centre Manager

Continued growth in enrolments has contributed to achieving our vision of strengthening community participation, enhancement and wellbeing as demonstrated by the increased participation across all of our courses, clubs and events.

Course Enrolments by Year





About us

The Park Orchards Community House & Learning Centre Incorporated is a vibrant community based organisation that provides quality community engagement through social, recreational and learning activities.

In 1978, under the auspices of the Park Orchards School Council, a community relations sub-committee organised a leisure time program, making use of the school art room. Four courses were presented in term 1, 1979, using local tutors, and Park Orchards Leisure Time Activities POLTA was born.

One of our aims is to provide an environment in which community members can enjoy lifelong learning. Park Orchards is a unique community – it has been described as a village in suburbia – and to maintain this situation it was seen as essential to foster the growth of POLTA. The success of POLTA led to the eventual establishment of the Community House in 1983 at 572 Park Road, Park Orchards.

In 1986 incorporation took place and we became Park Orchards Community House Inc. Three extensions have been made to the building due to the growth of our programs. We offer a wide range of courses, further education, art/craft, after school activities, health, fitness and self development programs.

In 2007 the name of the organisation was changed to Park Orchards Learning Centre Inc. and in 2013 we became the Park Orchards Community House & Learning Centre Inc., recognising both the educational stream and the community development programs offered by the organisation.

Park Orchards Community House & Learning Centre is a Registered Training Organisation offering Vocational Education and Training. We also offer pre-accredited courses that offer learners a pathway to employment or future education.

We are governed by a volunteer Board of Management selected from the House membership. They provide governance support to the organisation and determine its strategic direction.

“Strengthened Community Participation, Enhancement and Wellbeing”

Our Childcare Centre is well respected and patronised by the local community. We offer care that provides families with an opportunity to study or work whilst offering the children an educational program in a nurturing, supportive environment.

We provide parents a drop off and pick up service from the Park Orchards Kindergarten.

We are ideally located adjacent to the local Primary School and next door to the Kindergarten. We use rooms at Domeney Recreation Centre to run our Nationally Recognised Training and use Warrandyte South Hall for our health and wellbeing classes.

Staff include the Manager, Assistant Manager, Finance Administrator, VET Co-ordinator, Program Co-ordinator, Office Administrator, Childcare Co-ordinator and Early Childhood Educators.

We employ a range of Trainers and Tutors to deliver courses, classes and workshops to the community.

Manningham City Council own the buildings in which we operate and we are very grateful for their ongoing support.

Manningham Business Excellence Awards



Our centre was thrilled to receive a Business Excellence Award from the Manningham Business Network.

This is a great honour and acknowledges businesses that achieve positive outcomes in their business and community.

We would like to thank our staff, board members, volunteers, trainers and of course students for all you do to make our organisation an integral part of the local community.

We strive to live up to our mission which is to provide quality community engagement through social, recreational and learning activities.

We offer a variety of community classes, free clubs, vocational education and training, childcare and volunteer opportunities to empower our community members to live a life they love.

During 2017/2018 more than 380 people a week visited our organisation.

Park Orchards Community House & Learning Centre is a Not-For-Profit organisation that provides a comprehensive program of quality community engagement services and activities for people of all ages in our local community.

With funding and grants sourced from State and Local governments and fee-for-service revenue we deliver our program. We provide this inclusive program in a friendly and welcoming manner that meets, and responds to the needs of our community.

We provide the opportunity for people to realise their goals, whether they are training for a new career, getting fit and healthy, learning a new skill or just want some “me” time whilst their children are well cared for. We do this through the programs we offer such as:

- Community Classes - a large range of art, craft, language, music, fitness and technology, for preschoolers, primary schoolers, tweens, teens and adults of all ages and abilities.
- Free Clubs promoting social engagement and healthy activity, including access to the library and the community garden.
- Vocational Education and Training for those wanting qualifications that will enhance their career prospects.
- Childcare in a safe and nurturing environment.
- Free, subsidised and low cost activities for those facing financial barriers to participation.
- Opportunities to volunteer in our organisation and make a positive difference in someone else's life.
- Classes for those with Acquired Brain Injury and other all-ability activities

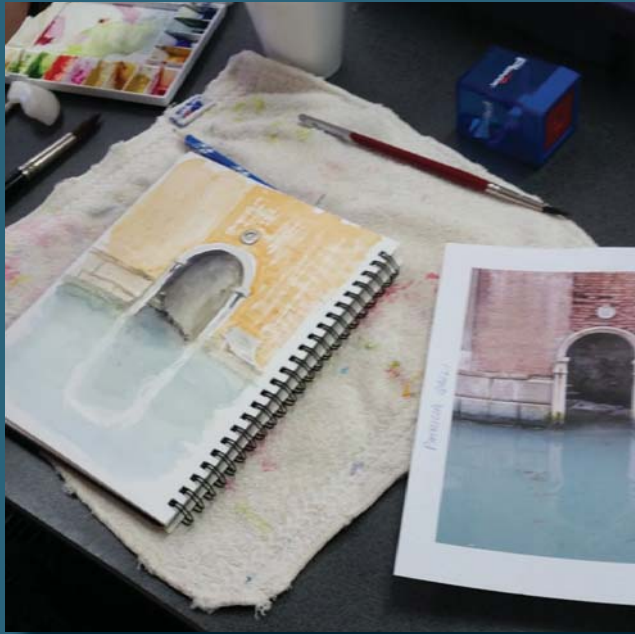
Our greatest success is the recommendation house users make to their friends, encouraging them to join a course or an activity with us.

Our unique selling point is that we continue to provide face-to-face training and learning for our community, when many of our competitors have moved their business to online training. Online training is a great “money saver” for organisations, but a poor learning environment for most people. Unlike other organisations, we are able to offer something for every member of the family, regardless of age, gender, interests or financial constraints.

Our students are our community, they become our friends, and we support them along their lifelong learning journey.



BEA | BUSINESS
EXCELLENCE
AWARDS
M A N N I N G H A M
BUSINESS EXCELLENCE 2018



Community

It is a privilege to have an opportunity to contribute to the sense of wellbeing and belonging of members of our community. Our free clubs, community events and courses allow people to come together for social, recreational and educational activities.

Adult Community Courses

Over the past 5 years, we have had a steady increase in enrolments. It is pleasing to see that more members of the community are enjoying our courses and activities. In 2018 we had an increase in enrolments from 1562 in 2017 to 1818 in 2018.

Our Nature in Art program continues to be a highlight of the community programs offered. The Annual Nature in Art Exhibition, held for the first time for a period of 3 weeks at MC2 in October, was a fantastic chance for students and teachers to celebrate their achievements. Due to the popularity of this exhibition, we had an increase in enrolments in our Nature in Art classes, with most classes at capacity and some classes with waiting lists. To meet the level of interest, we held a series of 'Come and Try' workshops with Terry Napier, as well as adding a new beginner's class with Peta Harrington.

Many of our other regular classes such as French, guitar, iPads, crochet, watercolour and our fitness classes have maintained steady enrolments thanks to our excellent instructors.

We had a focus on short workshops in 2018. These provide an opportunity for people to come together and try out a new skill without committing to a weekly class. Popular workshops include cake decorating, terrariums and kokedama, cheese making, bread making and the art of travel journalling.

Clubs

Our clubs provide positive opportunities for the community to connect with one another and pursue a range of interests. Our dedicated volunteers facilitate all of our free clubs and we thank them for their ongoing commitment. We had 118 members participate in our clubs this year, up from 60 the previous year, which include Walking Group, Genealogy Club, Book Club, Crafternoon, Photography Club, Writing Circle and the new Singing Group.

Learn Local

Our pre-accredited Learn local (ACFE) courses attract government funding for those wishing to return to further education or to improve work prospects. Our aim is to provide disadvantaged learners, or those who may wish to try for a new career, the opportunity to learn new skills.

In 2018, our popular ACFE courses included floristry, iPad training, digital literacy for all and bookkeeping. We provided an opportunity for a new cohort of people to participate in bookkeeping and floristry by running these courses at Warrandyte Neighbourhood House

Professional Development

In addition to professional training in First Aid and CPR we added Food Safety and Responsible Service of Alcohol to our program with a good level of enrolments.

Children's Courses

Children's Yoga and Creative Movement, Guitar and Cartooning classes continue to be well attended.

Marketing and Promotions

One of our most effective marketing strategies is social media advertising and Email marketing. Many enrolments come from our brochure. 8500 brochures are delivered each term to residents in the surrounding suburbs.

Community engagement is an important approach to increase awareness of who we are and what we do. Our staff held an information stall at the Park Orchards Markets, the St Anne's Strawberry Fair, the Chinese New Year Festival and Careers Expo at Manningham. Community events held at the house, such as morning teas, help to increase our profile in the community.

We publish a local Community Newsletter about 8 times a year which is delivered to approximately 1000 homes in Park Orchards. Other community groups such as sporting clubs and Neighbourhood Watch contribute stories to the newsletter. This provides an opportunity to connect to the local community and inform them of local stories and events as well as activities that are happening at the community house.

Kate Blacket
Program Co-ordinator

Robyn Murray Award

In 2011 the Community House Association of the Outer Eastern Suburbs (CHAOS) Network founded the Robyn Murray Award in memory of Robyn Murray, former Executive Officer of Japara Neighbourhood House and Manager of Glen Park Community Centre who passed away on 18 September 2010.

Robyn was well known as a person who was passionate about the inclusion of people of all abilities, and lived and breathed her convictions every day. The award recognises people who truly embrace the principles of inclusion in their work.



Our students were thrilled to learn that they had been recognised by the Robyn Murray Award. One of our students, Joel, wrote this wonderful piece about how much winning this award meant to the group.

Digital Literacy Class Award

On Fridays I attend a digital literacy class for all abilities group. The group was recently informed that we had won the Robyn Murray memorial organisation award. This award recognises people and programmes run in outer eastern neighborhood houses that promote and practice total community inclusion by including people of all abilities.

Robyn Murray, who sadly passed away in 2010 was a dynamic and amazingly passionate person who whole-heartedly believed in total inclusion for people with disabilities and fought like a lioness protecting her cubs for people, like myself, to become active participants in mainstream community programs. As somebody who knew her personally, I was extremely touched to hear that our group had received this award.

Every week, we are given the freedom to express ourselves creatively, in a supported environment. We joke, we laugh, we cry at each other's hardships and triumphs and then we write. We are given the opportunity to do a lot of creative writing as a group, through writing exercises, which allows us to think outside the box and thus prevent us from becoming completely consumed within our own thoughts and ideas, in turn we can flourish as writers. In addition to this we are also encouraged to share our own individual writing pieces. We also work on our communication skills, interviewing skills and we're also taught how to use computer programs such as movie maker.

In conclusion, our tutor is totally committed to fostering and fleshing out our talents and abilities as people with so called "disabilities". She always maintains that literature is about documenting the human experience. I can't think of a group more worthy of such an award. It completely embodies Robyn's spirit and I would like to think that she is present in the room with us every Friday. Thank you Robyn, rest in peace.

By
Joel Barraud

Congratulations to you all and thank-you again to our wonderful trainer Katherine and the dedication of her volunteers Kelvin and Andy.

The difference we make to students

“Dedicated and experienced trainers provided all the support that I needed.”

Justina (Ed Support)

“Enjoyed my time doing the course. Would let family and friends know about it. Very Hands on and I enjoyed the group.”

Joy (Ed Support)

“I truly appreciate all the help, guidance and encouragement I received while studying at this wonderful centre. Helen and Karen were wonderful people who, with their experience and knowledge helped me to grow and learn.”

Beth (Early Childhood)

“The Training explained very clearly and helped to prepare for work. I will highly recommend Park Orchards Community House & Learning Centre. Thank you everyone for your support.”

Nikki (Early Childhood)

“Love coming to class. Good bunch. Loved enrolling in a community setting.”

Steven (Training and Assessment)



Vocational Education & Training

2018 was a very busy and rewarding year with success in both high enrolment numbers and approval of scope applications. POCH&LCI extended its accredited scope in 2018 adding the CHC50113 Diploma of Early Childhood Education and Care and the HLTAID001 Provide CPR unit of competency. POCH&LCI completed over 160 TAE trainer/assessor upgrades, was approved to deliver Skills First funding for students in 2019 and won a \$25,000 ACFE Organisational Responsiveness Grant to explore future sustainable practices for the RTO in light of the FREE TAFE initiative.

We delivered four programs:

TAE40116 Certificate IV in Training and Assessment FULL course

- 1-night time course (May)
- 2-Day time courses (March and August)

TAE Trainer Assessor UPGRADES

- 56 FULL qualifications
- 112 UNIT upgrades

CHC30213 Certificate III in Education Support

- 3- day time courses over the year (February, April and July)

CHC30113 Certificate III in Early Childhood Education and Care

- 2- day time courses (March and August)

We were also able to deliver a pre-training course:

Return to Learn

Return to learn continued in 2018 with one course successfully running. This course is designed as a stepping-stone for those who wish to return to study but have not studied in any formal way for a number of years. It was very successful and ensured our students were off to a confident start!

A Year of Growth

It has been a very successful year for Park Orchards Community House & Learning Centre as an RTO. We ran successful daytime classes in Education Support, Early Childhood education and Care and Training and Assessment. Along with our regular qualifications, POCH&LCI also undertook the challenge of completing over 160 TAE VET trainer/assessor upgrades.

With the TAE40116 Certificate IV in Training and Assessment, approved at the end of 2017 and with new trainer/assessor requirements in the VET industry, POCH&LCI was in a position to offer FULL or single unit upgrades to VET trainers across Victoria. We were delighted to attract trainers from private, TAFE and community providers to our upgrade program.

POCH&LCI also launched a successful application to the state regulator for the ability to deliver the CHC50113 Diploma of Early Childhood Education and Care as a pathway for our CHC30113 Certificate III in Early Childhood Education and Care graduates.

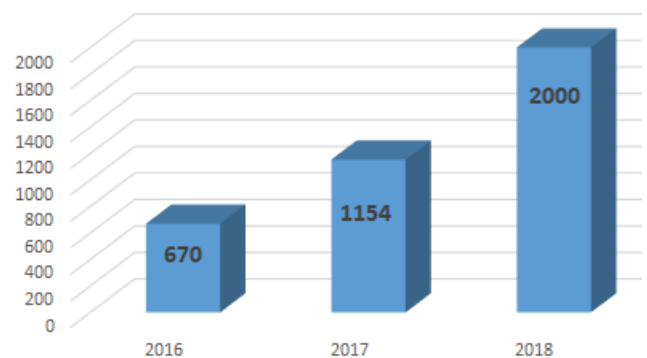
Our Courses

Throughout the year we have conducted industry consultation with the schools, preschools and childcare centres where our students gained their fabulous hands-on experiences. The Education Support (CHC30213) students enjoyed visits from Heathmont East Primary School, Andersons Creek Primary school and visited Croydon Special Development School, while the Early Childhood Education and Care students enjoyed excursions to Resource Rescue, Lilydale North Preschool and Park Orchards Preschool. All of these experiences help to build the knowledge and skills of our students and trainers.

In 2018 we welcomed three new members to our training team. Susan Tragear headed up our Training and Assessment delivery, Jenny Burr took on the role training both Early childhood and Education Support and Ann-Maree Thompson joined the Education Support trainers team. We also continued our relationship with trainers Geoff Collie, Helen Wursthorn, Karen McGown and Shaun Ornellas. Without their valuable contribution to the RTO, Park Orchards Community House wouldn't have the success it does.

This year has had many challenges for our facilitators and they have continued to show community commitment and dedication. A big thank you to our growing team.

Total Accredited Units Completed



Nature in Art



Established in 1996 at Park Orchards Community House & Learning Centre, the Nature in Art group is dedicated to the study of natural history illustration and painting. Working on a diverse range of subjects, its members' principle aim is to gain knowledge and understanding of a subject's physical characteristics through close observation and to capture the detail in a pleasing, graphic way. This combines scientific accuracy with artistic vision and allows different students to paint with varying levels of detail.

Nature in Art covers an extensive range of subjects: flowers, insects and animals. Under the guidance and encouragement of the teachers, students learn to see things in a new, more complex way and their paintings emerge into beautiful works of art.

Some of our 80 students have been involved in our Nature in Art program for over a decade and our community of artists includes the renowned botanical artists and tutors Terry Napier, David Reynolds and Marta Salamon.

Terry Napier was awarded the Celia Rosser Medal in 2010. He has paintings in the State Collection, the Cranbourne Collection at the Royal Botanical Gardens in Melbourne and also The State Library Florilegium Collection. Terry's paintings can be found within homes around the world as well as throughout Australia and New Zealand. He is represented in the Australian collection in the Inaugural International Botanical Exhibition 2018.

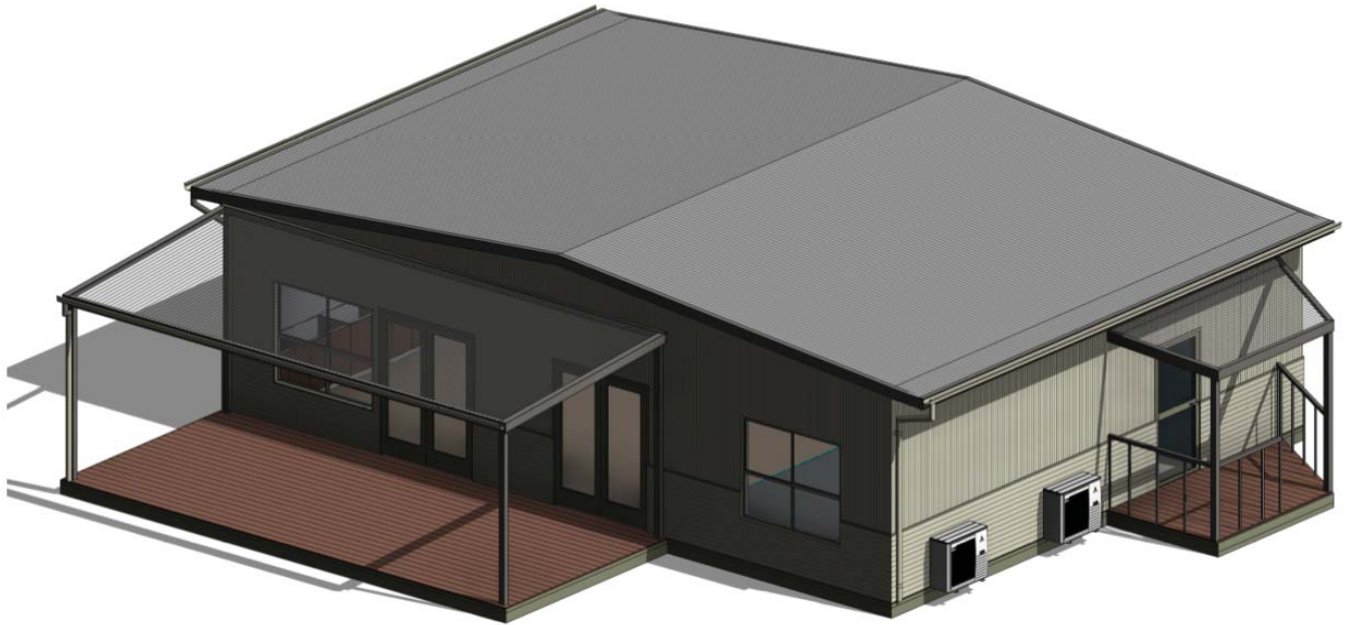
David Reynolds specialises in Australian native and exotic plants. His career spans over 30 years in art, graphic design and illustration and has artwork represented in private collections both in Australia and internationally. David's work has been selected for the Illustrated Garden Collection, or Florilegium, of significant plants growing in the Royal Botanic Gardens in Melbourne.

Marta Salamon's work is represented in the State Collection in Melbourne and in the Sutton Collection in New York as well as in private collections around Australia. Marta has been a finalist in the Waterhouse Natural History Art Prize and the Museum of South Australia. Marta has also contributed to the recently published "Florilegium" of the Sydney Botanic Gardens. In 2016 Marta was awarded a Celia Rosser Medal at the Melbourne Bi-Annual Royal Botanic Gardens Exhibition.

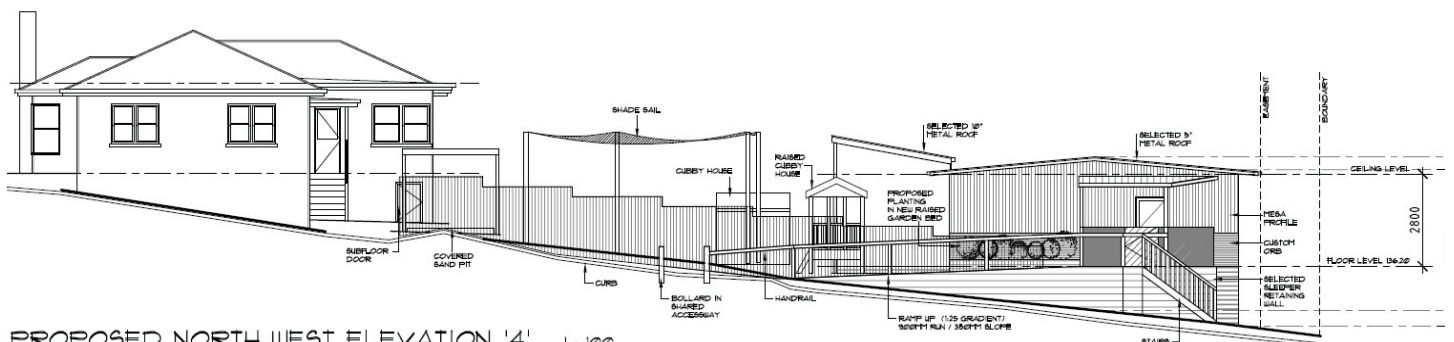
In October 2018, our 17th annual Nature in Art exhibition was held at Manningham Gallery for the first time. This was thanks to funding from Manningham City Council's Community Grants Program. Many of our students were delighted to be able to showcase their artworks at this well attended 3 week exhibition. A number of our students have also had their work included in "The Art of Botanical Illustration" Bi-Annual Exhibition held by the Royal Botanical Gardens in Melbourne. This exhibition draws artists from all over Australia and internationally.

Our Centre has a wonderful reputation for the study of Natural History Art. Each week over 70 students participate in our many classes specific to this beautiful form of art.

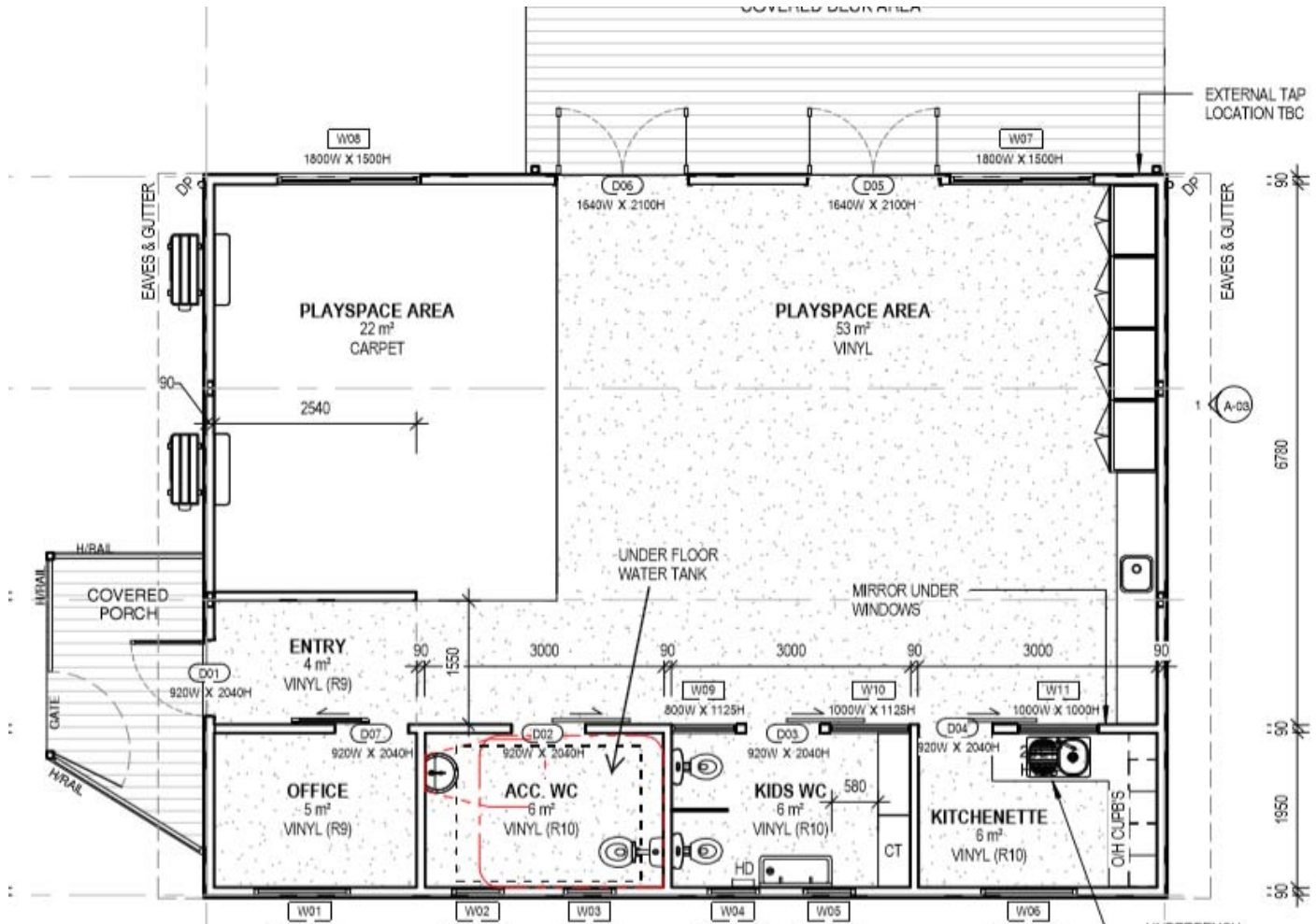




In the past six years, enrolments at our community house have tripled, and the number of courses, classes and workshops we offer has doubled. Our project is to build an accessible, multi-purpose community building on the vacant land behind our ageing Community House. This will enable us to continue to provide much needed support, engagement, learning and training activities that result in positive outcomes for everyone in our community. Activities will include education and care for those aged 0-5, school holiday programs, health and wellbeing classes, art and creativity workshops and community information sessions.



PROPOSED NORTH WEST ELEVATION '4' 1:100



This space will allow us to provide more new and innovative courses, classes and activities. We will also extend the provision of vital occasional care services for families in the area. The building will have improved access so people of all abilities can participate in health, leisure, art and creative pursuits.

We are delighted that our project was voted for by our community and work is already underway to provide this much needed and valuable new room.

The difference we make to families



“We started sending our daughter Edith to Park Orchards Community House Childcare last year just before she turned 1. We love the warm, caring environment. The staff are all professional, thoughtful and cheerful and look after Edie just as we would. Edie benefits from the social interaction with other children and enjoys whatever activities are planned - sometimes we turn up and there are newly hatched chicks, sometimes the tables are set with felt picture boards or playdough or rotary telephones! It is a lovely space and we are very happy, confident and comfortable when Edie is attending. I wouldn’t hesitate to recommend this service to others. We are local and love how it is only two minutes from home. It is just right for us.

Felicity

“It was hard putting our daughter into care, but it was made so much easier by the warmth and affection of the amazing staff at Park Orchards Learning Centre. They have helped us navigate through the difficult world of raising a child and our daughter just adores Hilary and her team.”

Evan

Thank-you;

Our volunteer Andrea for always being willing to help us in whatever is needed to be done.

All of the other staff that have supported our area and me as the Early Childhood Co-ordinator.

The Board of Governance 2018 for the great continual support to The Early Childhood program at Park Orchards Community House & Learning Centre

Childcare

Providing a warm, caring and welcoming environment where children feel safe, worthwhile and important.

This year has again seen a huge amount of growth and change, not only in the children but also in the program we offer. We have been able to adapt our program more to suit the needs of families within the community.

In 2018 we received Government approval to offer the Childcare Subsidy (CCS) to eligible families. The Child Care Subsidy is means and activity tested, so families may be eligible for a rebate of up to 85%. This also led to the introduction of the new Childcare Xplor electronic system. Childcare bookings are now completed online via our website.

Pick my Project – A room to play, learn, grow, and share. Thank-you to Emma for nominating us for this project to which we were successful! This project will create an extension of our already popular children's service and also provide activities for other community courses and groups. We eagerly await further development of this project over the next year.

Many thanks to the Childhood Educators for providing quality care for the children. Trina, Sarisse, Micaelia, Elma and Harpinder are dedicated Educators, being always ready to help and support each other and myself. I am grateful for our mix and match team being able to call on each other when needed. A big thank-you to Harpinder and Trina who were able to step up when I took time off for personal leave. Without this commitment and dedication from the Educators our childcare sessions would not be as successful. Each week the thoughtful insight into the children's interests and the research from each of the individual Educators contributes to the program. Professional Development for Educators has been ongoing throughout the year, keeping updated with the implementation of the Early Years Learning Framework in our program.

Our Educators plan play-based educational programs to support the children's learning. The programs are planned to meet the individual needs and interests of each child. Through the year we were able to provide children with a broad range of learning experiences, such as the very popular play dough, home corner, book area, puzzles, Lego, blocks, dressing up, hairdressing, mechanics and a variety of imaginative play including music and movements. We facilitated many culture engaging cultural experiences including Chinese New Year, Mexican fiesta celebrations and Diwali festival. We also provided lots of art experiences such as painting, pasting and natural materials. Lastly, let us not forget the very popular out-door play area which includes the sand pit, cubby house, climbing, water play, riding bikes, cars and ball games.

We look forward to a wonderful 2019 year

Hilary Ramadge

Early Childhood Co-ordinator



The difference we make to families

“We love activity group as it gives our child a safe place to be looked after in our community. Given the age group 3 and 4 year olds it’s a great space for them to socialise with similar ages and have activities to keep them entertained prior to starting school or in between kinder days. We especially love the advantage of being able to have our child walked over to park orchards kinder for their afternoon kinder session. Our child loves activity group and especially the beautiful teachers whom make them feel safe and secure away from their parents. Activity group has been a highlight of our child’s week and we thank you for the opportunity for him to attend.

*Kind regards
Emily*

“My son Ollie has been attending Park orchards community house since around October 2018. After numerous attempts at settling him into other day-cares and occasional care we thought we would give Park Orchards Community House a go as a final option.

After a few weeks, he was happy to attend and now loves going most weeks with little to no tears!!

I cannot thank the staff enough for making him feel safe, secure and able to enjoy time with new friends. The option of walking to Kinder is also ideal for our family as it allows me to work longer hours on a Wednesday and has made the work/life juggle much easier.

*I recommend Park Orchards Community House to all my friends!
Thank you! “*

Alex



Activity Group

This program is a wonderful preparation and introduction to kindergarten for the children.

The Activity Group runs Friday mornings and includes excursions and incursions.

Our Activity Group program supports your child's growing independence, their self-awareness and self-esteem. The children are provided with developmentally appropriate activities and experiences for further challenges, and are encouraged to explore relationships with others in a supportive and safe environment. Our program includes a variety of individual, small and whole group play experiences.

Our 3yr old Activity Group children participated in many varied inclusions and excursions this year:

- Mother's Day morning Tea- Cup cake Decorating
- Ambulance visit – take a look inside an Ambulance
- National PJ day- designed to raise awareness of children in foster care
- Naidoc Week -which is a week that features activities that celebrate Aboriginal and Torres Straight Islanders
- Chicken hatching program-
The children had the opportunity to observe chicken hatching. An incubator and fertile eggs were delivered from a company called Living Eggs. This experience gave the children the chance to observe the birth and development of a chicken.
- Father's Day- Pancake Breakfast
- Football Day- Wear your team colours- Handball skills target game
- Grandparent's Day- Grandparent's spent time with their Grandchild
- Run and Tumble Photography, photographed our children. Providing families with great future memories of their children's early childhood year.

I would like to take this opportunity to say thank you to Micaelia and the families of the children, for their valued input into making our Friday Activity Group a fun filled, safe learning environment. A special thank-you to Jenny Barr filling in for me while I was on personal leave.

We would like to thank all the organisations for their kind donations and generosity:

- Baker's Delight Ringwood North
- Pancake parlour

Hilary Ramadge

Early Childhood Co-ordinator





Community Garden

***“To plant a garden
is to believe in
tomorrow.”***

- Audrey Hepburn

The Park Orchards Community House garden is a lovely welcome to the property. A combination of vegetables, fruit, herbs and flowers calm with it's colours and smell as one approaches the front door.

The Garden provides fresh vegetables for all, inspiration for our painting students and future gardeners as well as fun for our children from childcare.

We can all take pleasure in our free moments to enjoy the serenity, sights and smells!

Thank you to our dedicated gardeners, Alby, Janice and Rhona, who are to be seen even in the holidays watering and tending.



Library

The Park Orchards Community House Library has continued to grow and be a focal point, a place of social contact for students, staff, volunteers and the larger community.

Libraries are important cornerstones of a healthy community. As such, we look forward to welcoming all, not just local residents, to access this valuable free service.

To date, we have a collection of nearly 3,000 books which include: fiction, non-fiction and books for young children and teens, as well as audio books, CD's and DVDs.

It is hard to believe it has been 5 years since the library was first set up and that people are continuing to donate, borrow and read books!

Thank you to our wonderful volunteers, Jasmine and Janice, for their dedication and valuable contribution to the running of the library.

***“The more that you
read, the more things
you will know.***

***The more that you
learn, the more places
you’ll go.”***

- Dr Seuss

We gratefully acknowledge funding and support from:

Manningham City Council

Manningham City Council, not only for the fiscal support but also for the continuing support from council officers.

We also value and appreciate the support given to us by our Councillors Andrew Conlon, Sophy Galbally and Paul McLeish.



Department of Health and Human Services

We are grateful for the financial support offered by the Victorian Government through the Department of Health and Human Services, who value the work we do as a Neighbourhood House.



Department of Education and Training

The Department of Education and Training offers support through the Adult Community & Further Education program, and 'Skills First'.



Park Orchards Community House & Learning Centre Inc.
(Incorporation Number A0011092D)
(ABN 18 790 057 404)
(TOID 4008)